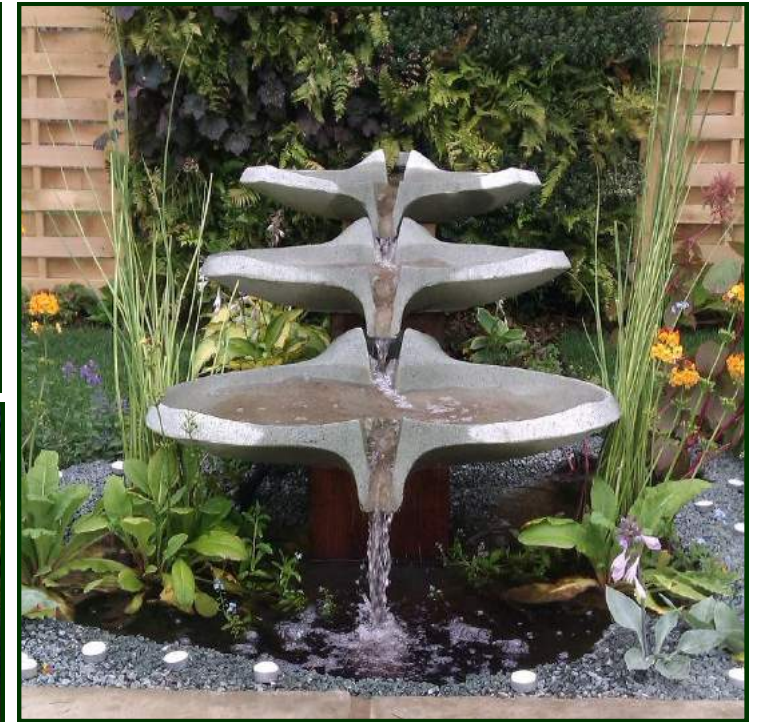
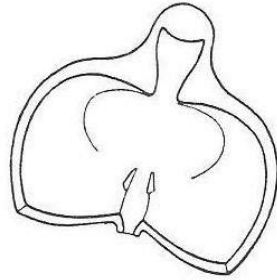


# Ebb & Flow

Water Sculptures and Landscapes

Ruskin Mill Old Bristol Road Nailsworth  
Gloucestershire GL6 0LA United Kingdom  
TEL / FAX: +44 (0)1453 836060  
Email: info@ebbandflowltd.co.uk



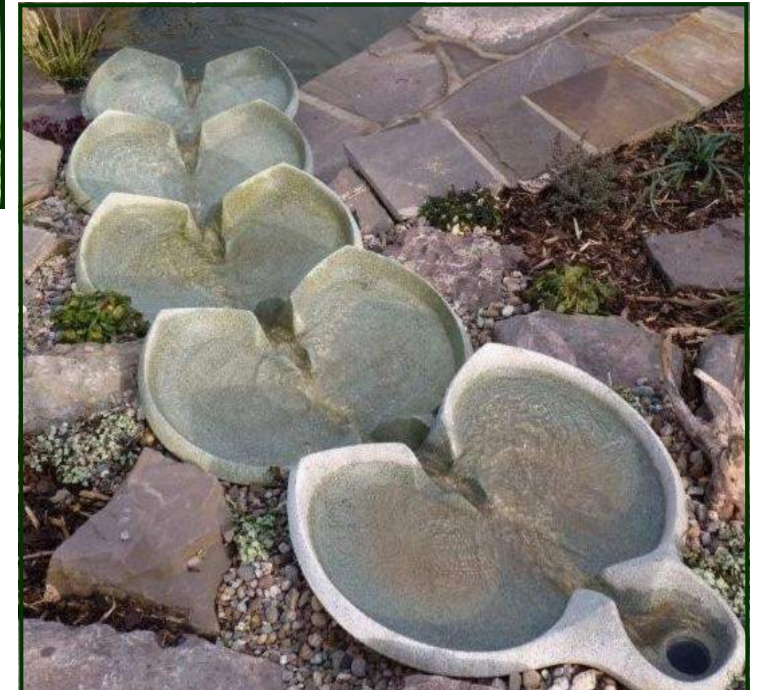
## Emerson

This elegant form has a strong full-bodied, swinging water movement and the flow well defined with little turbulence.

These harmonious qualities enable it to stand well as a cascade in any setting. It can also be used as a single piece on a patio or beside an entrance to a building.

Available in two sizes, the larger having a 'cast-in' cap over the entry section, the smaller having a removable cap.

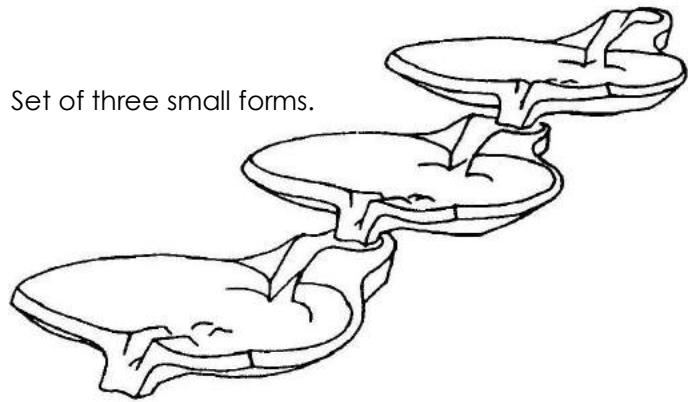
*Design © Flowform Design Ltd*



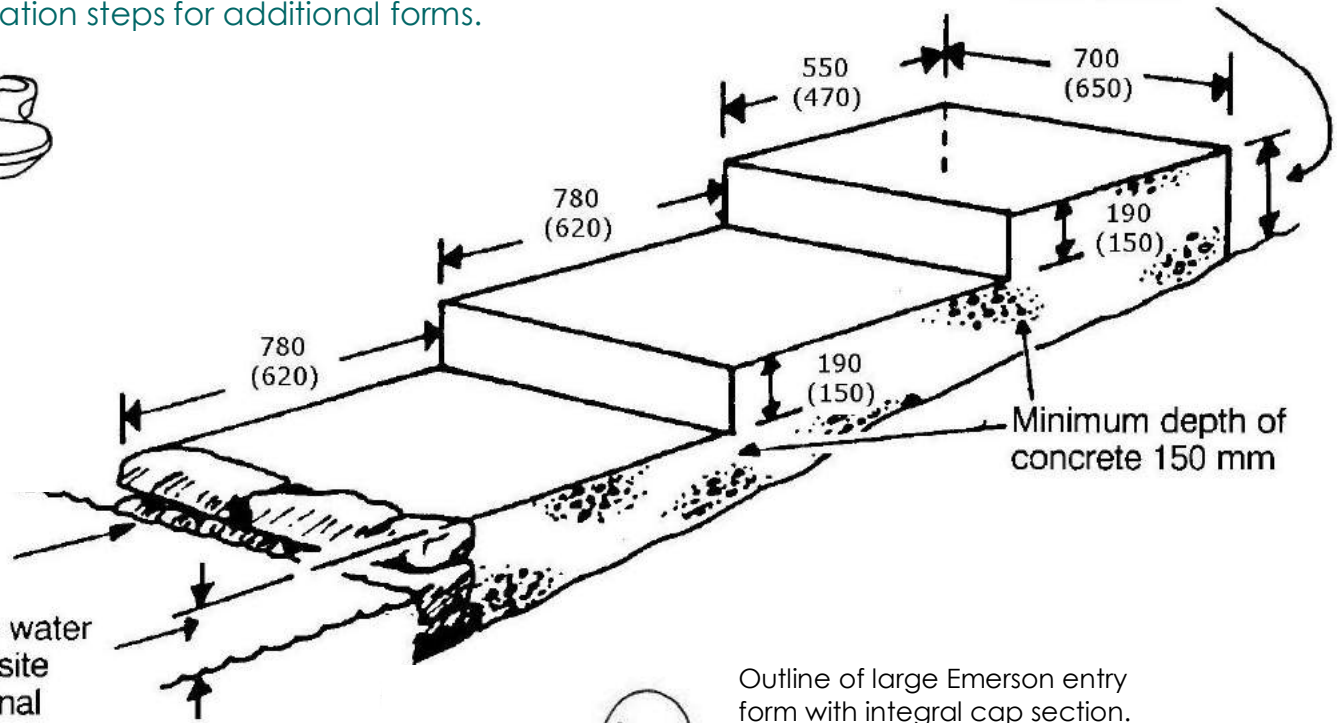
# Foundations for a cascade with 3 forms set into the landscape

(sizes for small model in brackets)

Simply add more foundation steps for additional forms.



Set of three small forms.

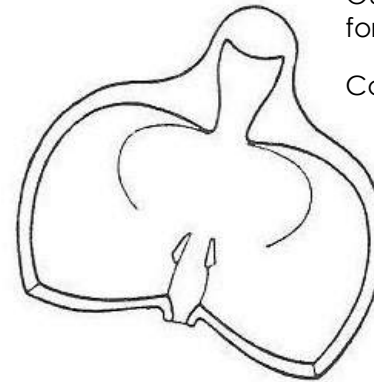


200 mm depth needed during construction for inlet pipework

Exposed face may be constructed in natural stone

Height above water according to site  
100mm nominal

Line may be curved up to 5° at each junction



Outline of large Emerson entry form with integral cap section.

Cap on small form is removable.

## Emerson Technical (smaller size in brackets)

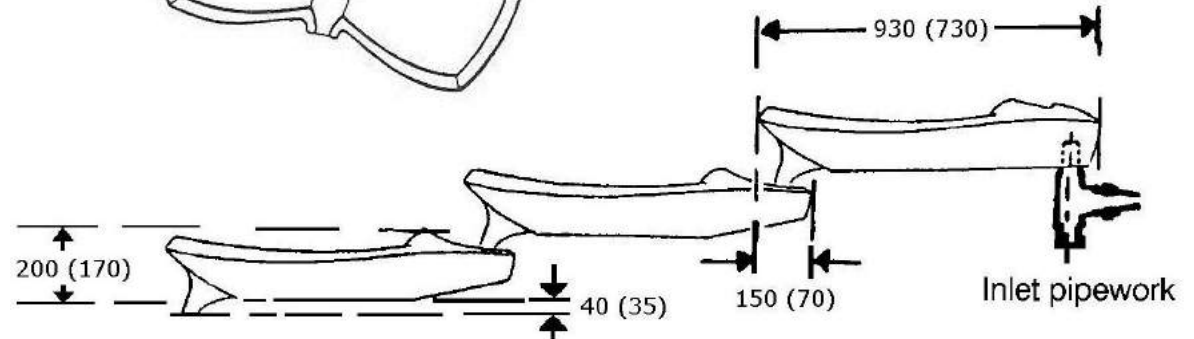
**Flow rate:** 45-85 (20-40) litres/min

**Width:** 990 (680) mm

**Height:** 240 (205) mm

**Weight:** 85 (32) kg

**Material:** Cast granite stone with hand etched finish



Inlet pipework